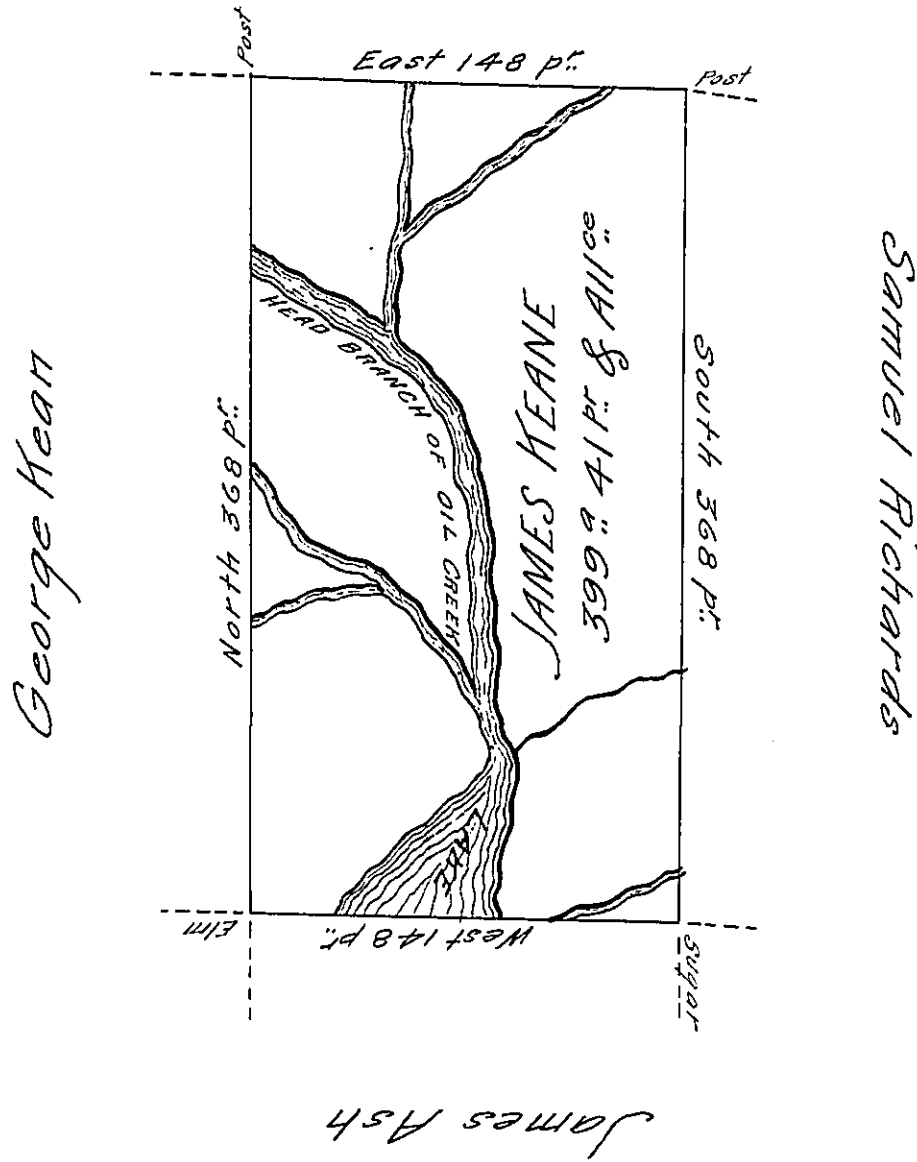


John Ryan



Situate on the East side of French Creek
 in the County of Allegheny adjoining lands of
 John Ryan - and others Containing 399 & 41 perch-
 es and allowance of Six & Cent for roads &^{co} Sur-
 veyed the 26th day of May 1795 In pursuance of his
 Improvement bearing date the 25th day of May 1795.

W^m Power D^r. Sr.

To Daniel Brodhead Esq^r. }
 Surveyor General }

IN TESTIMONY that the above is a copy of the original remaining on file in
 the Department of Internal Affairs of Pennsylvania, made
 conformably to an Act of Assembly approved the 16th day of
 February, 1833, I have hereunto set my Hand and caused
 the Seal of said Department to be affixed at Harrisburg,
 this twentieth day of July 1906

Grace D. Brown
 Secretary of Internal Affairs.